

## **ARKY 303: ARCHAEOLOGY OF NORTH AMERICA**

Winter Semester 2014

Instructor: Mr. Don H. Butler

Office: ES750

Email: [dhbutler@ucalgary.ca](mailto:dhbutler@ucalgary.ca)

Office Hours: Thursdays 3-5 pm or by appointment

Class: SS109

Times: Mon, Wed, Fri 11:00-11:50 am

### **Course Description:**

This course provides a general survey of the archaeology of North America, north of Mexico. Temporal coverage extends from the earliest known evidence for human settlement in North America up to the period of European contact. Geographical regions covered include the Arctic, Subarctic, Plains, Plateau, Great Basin, West Coast, Northwest Coast, Eastern Woodlands, and Atlantic Canada. Past cultures discussed include Paleo-Indian, Norton, Dorset, Thule, Inuit, Pueblo, Adena, Hopewellian, Mississippian, Algonquian, Iroquoian, Norse, and Basque. Although principally descriptive in nature, this course introduces some current issues and debates within North American Archaeology, such as pseudoscientific explanations of the initial peopling of North America, aboriginalism, and alternative histories. Students will also gain a basic working knowledge of the goals and methods of archaeological research.

### **Required Text:**

Fagan, Brian M. 2005. *Ancient North America: The Archaeology of a Continent*, Fourth Edition. Thames and Hudson, London.

### **Course Grading:**

- **Quiz 1: 30%** (Monday, February 10) Material covered up to the quiz; multiple choice
- **Quiz 2: 30%** (Wednesday, March 19) Material covered after the first quiz; multiple choice
- **Final Exam: 40%** (TBA) The final exam will be a multiple choice exam that covers all course materials, including readings and lectures. This exam will be scheduled during the exam period.
- \*Note: A passing grade on any particular component is not essential to pass the entire course.

### **Important Dates:**

Quiz 1: Monday, February 10

Quiz 2: Wednesday, March 19

Reading Week: Sunday, February 16 to Sunday, February 23

Last Day of Classes: Monday, April 14

Exam Period: Thursday, April 17; Saturday, April 19 to Tuesday, April 29

## **TENTATIVE LECTURE SCHEDULE:**

### **Week 1: Introduction**

1. Course Description (Wed, Jan 8)
2. What is Archaeology? (Fri, Jan 10)

### **Week 2: Goals, Methods, and Theories**

3. The Foundation of North American Archaeology (Text pp. 22-37) (Mon, Jan 13)
4. Accessing the Past: Method and Theory (Text pp. 38-52) (Wed, Jan 15)
5. Explaining Prehistoric Cultural Change (Text pp. 53-68) (Fri, Jan 17)

### **Week 3: The Paleo-Indians**

6. First Settlement (Text pp. 71-96) (Mon, Jan 20)
7. Later Paleo-Indian Cultures (Text pp. 97-114) (Wed, Jan 22)
8. Video: America's Stone Age Explorers (Fri, Jan 24)

### **Week 4: The Great Plains; The Far North I**

9. Bison Hunters on the Plains (Text pp. 117-141) (Mon, Jan 27)
10. Village Farmers of the Plains (Text pp. 142-164) (Wed, Jan 29)
11. Early Arctic Cultures (Text pp. 167-190) (Fri, Jan 31)

### **Week 5: The Far North II**

12. Norton and Dorset (Text pp. 191-212) (Mon, Feb 3)
13. Thule and Inuit (Text pp. 191-212) (Wed, Feb 5)
14. **Review** (Fri, Feb 7)

### **Week 6: The West I**

15. **Quiz 1** (Mon, Feb 10)
16. Early Hunter-Gatherers on the West Coast (Text pp. 215-230) (Wed, Feb 12)
17. Later Prehistoric Societies of the Pacific Coast (Text pp. 233-263) (Fri, Feb 14)

**Week 7:** Reading Week: Sun, Feb 16 to Sun, Feb 23

### **Week 8: The West II**

18. The Great Basin and Western Interior (Text pp. 264-294) (Mon, Feb 24)
19. The Archaic of the Southwest and Lower Pecos (Text pp. 295-314) (Wed, Feb 26)
20. Agriculture and Village Life (Text pp. 315-334) (Fri, Feb 28)

### **Week 9: The West III; The Eastern Woodlands I**

21. The Rise of Pueblo Society (Text pp. 335-367) (Mon, Mar 3)
22. Early and Middle Archaic Cultures of the Eastern Woodlands (Text pp. 371-398) (Wed, Mar 5)
23. Late Archaic Cultures of the Eastern Woodlands (Text pp. 399-420) (Fri, Mar 7)

**Week 10: The Eastern Woodlands II**

- 24. Early Woodland and the Adena Complex (Text pp. 421-434) (Mon, Mar 10)
- 25. Middle Woodland and Hopewellian (Text pp. 435-456) (Wed, Mar 12)
- 26. Mississippian Climax (Text pp. 457-488) (Fri, Mar 14)

**Week 11: The Northern Woodlands**

- 27. **Review** (Mon, Mar 17)
- 28. **Quiz** (Wed, Mar 19)
- 29. Algonquians and Iroquoians (Text pp. 489-508) (Fri, Mar 21)

**Week 12: The Historic Period**

- 30. The Archaeology of European Contact (Text pp. 511-540) (Mon, Mar 24)
- 31. The Norse Discovery of North America (Text pp. 18-22) (Wed, Mar 26)
- 32. Basque Whalers in Labrador (Fri, Mar 28)

**Week 13: Issues and Debates I**

- 33. Pseudoscientific Explanations of Initial Peopling (Mon, Mar 31)
- 34. Norse and Dorset Contact (Wed, Apr 2)
- 35. Video: The Viking Deception (Fri, Apr 4)

**Week 14: Issues and Debates II**

- 36. Aboriginalism; Indigenous Archaeology; Alternative Histories (Mon, Apr 7)
- 37. Cultural Resources Management; Applied Archaeology (Wed, Apr 9)
- 38. **Review** (Fri, Apr 11)

**Week 15**

- 39. **Review** (Mon, Apr 14)

## ADDITIONAL CONTENT:

### Grading

Grades scored between	will equal
95 % and 100%	A+
90 % and less than 95%	A
87 % and less than 90%	A-
84 % and less than 87%	B+
80 % and less than 84%	B
77 % and less than 80%	B-
65 % and less than 77%	C+
60 % and less than 65%	C
55 % and less than 60%	C-
50 % and less than 55%	D
0 % and less than 50%	F

**A+ grade** will become an official grade at the University of Calgary starting Fall Session, 2002. The A+ grade is described as an honorific grade having the same grade point value as an A grade (4.0). It will be used to indicate outstanding performance in a subject area but does not have a higher grade point value

### Writing across the Curriculum

Writing skills are not exclusive to English courses and, in fact, should cross all disciplines. The University supports the belief that throughout their University careers, students should be taught how to write well so that when they graduate their writing abilities will be far above the minimal standards required at entrance. Consistent with this belief, students are expected to do a substantial amount of writing in their University courses and, where appropriate, instructors can and may use writing and the grading thereof as a factor in the evaluation of student work. The services provided by the Writing Centre in the Effective Writing Office can be utilized by all undergraduate and graduate students who feel they require further assistance.

### Academic Accommodation Policy

The purpose of academic accommodation is to provide students with documented disabilities equal opportunity to master the essentials of a post-secondary education. Students with disabilities at the University of Calgary have met all admission requirements but may have done so with the use of accommodations. Similarly, they are expected to meet all academic and non-academic requirements. Adaptive technology and other academic accommodations do not relieve students of their responsibility to develop the essential skills and abilities expected of all students.

Please refer to the following web link for detailed information: <http://www.ucalgary.ca/drc/node/71>

### Disability Resource Centre Accommodations

It is the responsibility of the student to request academic accommodations. If you are a student with a documented disability who may require academic accommodation and have not registered with the

Disability Resource Centre, please contact their office at (403) 220-8237. Students who have not registered with the Disability Resource Centre are not eligible for formal academic accommodation. Students are also required to discuss their needs with the instructor no later than fourteen (14) days after the start of the course.

### **Freedom of Information and Protection of Privacy Act**

The University of Calgary is committed to protecting the privacy of individuals who work and study at the University or who otherwise interact with the University in accordance with the standards set out in the Freedom of Information and Protection of Privacy Act. Please refer to the following link for detailed information: <http://www.ucalgary.ca/legalservices/foip>

### **Academic Misconduct**

Academic dishonesty is an unacceptable activity at the University of Calgary and students are **strongly advised** to read the Student Misconduct section of the University Calendar. Quite often, students are unaware of what constitutes academic dishonesty or plagiarism.

The most common are:

- 1) Presenting another student's work as your own
- 2) Presenting an author's work or ideas as you own without proper referencing
- 3) Using work completed for another course

This activity will not be tolerated and students conducting themselves in this manner will be dealt with according to the procedures outlined in the University Calendar.

For detailed information on what constitutes academic misconduct, please refer to the following link: <http://www.ucalgary.ca/pubs/calendar/current/k-2-1.html>

### **Plagiarism**

Plagiarism involves submitting or presenting work as if it were the student's own work when it is not. Any ideas or materials taken from another source written, electronic, or oral must be fully and formally acknowledged.

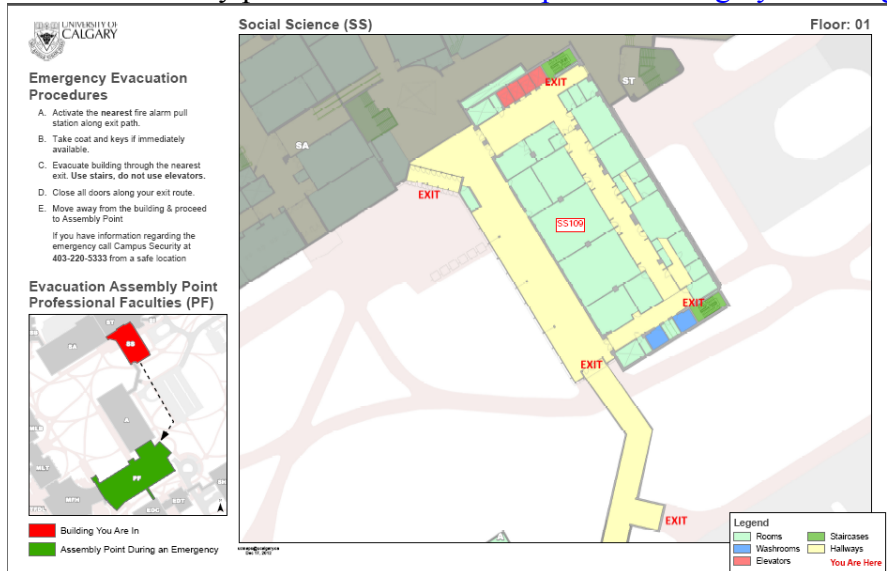
Plagiarism includes but is not limited to:

- a) The work submitted or presented was done, in whole or in part, by an individual other than the one submitting or presenting the work (this includes having another impersonate the student or otherwise substituting the work of another for one's own in an examination or test)
- b) Parts of the work are taken from another source without reference to the original author
- c) The whole work (e.g., an essay) is copied from another source

While it is recognized that scholarly work often involves reference to the ideas, data and conclusions of other scholars, intellectual honesty requires that such references be explicitly and clearly noted. Plagiarism is an extremely serious academic offence. It is recognized that clause (d) does not prevent a graduate student incorporating work previously done by him or her in a thesis or dissertation.

## Emergency Evacuation Assembly Points

In the event of an emergency that requires evacuation, please refer to the following link to become familiar with the assembly points for the class: <http://www.ucalgary.ca/emergencyplan/assemblypoints>



## Safewalk Information

Campus Security, in partnership with the Students' Union, provides the Safewalk service, 24 hours a day to any location on Campus including the LRT, parking lots, bus zones and University residences. Contact Campus Security at (403) 220-5333 or use a help phone, and Safewalkers or a Campus Security Officer will accompany you to your campus destination.

## Faculty of Arts Program Advising and Student Information Resources

- Have a question, but not sure where to start? The new Faculty of Arts Program Information Centre (PIC) is your information resource for everything in Arts! Drop in at SS102, call us at 403-220-3580 or email us at [artsads@ucalgary.ca](mailto:artsads@ucalgary.ca). You can also visit the Faculty of Arts website at <http://arts.ucalgary.ca/undergraduate> which has detailed information on common academic concerns.
- For program planning and advice, contact the Student Success Centre (403) 220-5881 or visit them in their new space on the 3rd Floor of the Taylor Family Digital Library.
- For registration (add/drop/swap), paying fees and assistance with your Student Centre, contact Enrolment Services at (403) 210-ROCK [7625] or visit them at the MacKimmie Library Block.

## Contact Information for Student and Faculty Representation

Student Union Vice President – Academic

Phone: (403) 220-3911

Email: [suvice@ucalgary.ca](mailto:suvice@ucalgary.ca)

Student Union Faculty Representatives

Jarett Henry Arts Rep. [arts1@su.ucalgary.ca](mailto:arts1@su.ucalgary.ca)

Zainab Malik Arts Rep. [arts2@su.ucalgary.ca](mailto:arts2@su.ucalgary.ca)

Levi Nilson Arts Rep. [arts3@su.ucalgary.ca](mailto:arts3@su.ucalgary.ca)

Maggie Pham Arts Rep. [arts4@su.ucalgary.ca](mailto:arts4@su.ucalgary.ca)

Student Ombudsman's Office <http://www.ucalgary.ca/provost/>