

**DEPARTMENT OF ANTHROPOLOGY**  
**University of Calgary**

**ANTHROPOLOGY 311.60: Primate Behaviour**  
**Summer 2013**

Class Time: MW 12-2:45pm

Class Location: ES162

**Instructor:** Mackenzie Bergstrom

Email: [mbergstr@ucalgary.ca](mailto:mbergstr@ucalgary.ca)

Office Hours (ES 710A): Mondays and Wednesdays 3-4pm

**COURSE DESCRIPTION**

This course will cover the fundamentals of primate behaviour research and theory, including: evolution, social dynamics, socio-biology, socio-ecology, dominance, aggression, kinship, sexual behaviour, reproductive strategies, cognition, and communication. You will learn primate taxonomy and be able to apply these concepts to conceptualize and describe genetic, ecological and behavioural variation exhibited across primate groups.

**LEARNING OBJECTIVES**

By the end of this course you will be able to:

- Explain the history and motives behind primate studies in terms of understanding human evolution and species variation.
- Recognize features and theories associated with the origin of the primate pattern and primate evolutionary history.
- Identify primate taxonomy and characteristics unique to each taxonomic group.
- Distinguish between the different elements of primate socio-ecology, social groups, and factors that contribute to group variation, including male and female reproductive strategies and their influence on social organization.
- Describe the principles of natural selection and sexual selection, as well as the components of sociobiology.
- Discuss characteristics associated with stages of the primate lifecycle.
- Explain how primates share information with each other through four modes of communication, as well as how they interact with non-primate species.
- Identify threats to primate populations and organizations involved in the development of conservation policies.

**REQUIRED TEXT:** *Primate Behavioural Ecology* by Karen Strier, 4th Edition, 2010

**CLASSROOM NORMS**

Norms will be negotiated on the first day of class and will cover the following areas:

- Attendance and punctuality
- Questions and participation
- Use of technology: laptops and cell phones
- Exam attendance and conduct



## **ATTENDANCE AND COURSE MATERIALS**

Students will need to attend class to do well in this course! The textbook material is related and complementary to lecture material. However, lectures will not be tightly tied to the format of the textbook and both need to be mastered to do well on exams. Students should read the text and pay close attention to areas where it overlaps with the lectures. Please read the text to understand broad ideas, theories, definitions, and to learn which primate groups and species are associated with learned concepts. The text provides different examples than what is covered in class to supplement your learning and to help to clarify concepts.

**Lecture notes:** will be posted as 3- and 6-slide PDF handouts on Blackboard (<http://blackboard.ucalgary.ca>) and can be printed before class to assist in note-taking. Some pictures and whole PPT files will not be posted due to copyright of figures and photographs.

## **TENTATIVE SCHEDULE**

**Subject to change depending on how quickly material is covered or unforeseeable circumstances (e.g., university closure).**

<b>DATE</b>	<b>LECTURE MATERIAL AND TESTS</b>	<b>TEXT CHAPTER</b>
Wednesday July 3	Course overview An introduction to primate studies The primate pattern & theories for the origins of the primates	1
Monday July 8	Primate survey: Strepsirrhines, Tarsiiformes and New World monkeys Video: <i>Lemurs with John Cleese</i>	2*
Wednesday July 10	Primate survey: Old World monkeys and apes Group living and dispersal patterns	2*
Monday July 15	Social and mating systems Prep for exam 1 Natural Selection, kin selection and reciprocal altruism (to be tested on Term Test 2)	3 4
Wednesday July 17	<b>Term Test 1 (Lectures, videos and chapters 1, 2, and 3 in Strier text)</b> Video (following test): <i>Monkey Island - Cayo Santiago Rhesus macaques</i>	
Monday July 22	Sexual selection, parental investment and limiting resources	5
Wednesday July 24	Male reproductive strategies Video: <i>Gelada Baboons - The Battles of Braveheart</i>	5,8
Monday July 29	Female reproductive strategies, food competition and socio-ecology Video: <i>The New Chimpanzees</i>	5,6,7
Wednesday July 31	<b>Term Test 2 (Lectures, videos, and chapters 4, 5, 6, 7, 8 in Strier text)</b> Video (following test): <i>Gremlins: Faces in the Forest</i>	
Monday August 5	<b>Alberta Heritage Day. University closed. No lectures.</b>	
Wednesday August 7	The primate life cycle	9
Monday August 12	Communication and cognition Video: <i>Ape Genius</i>	10
Wednesday August 14 (last class)	Primate community ecology and conservation Video: <i>The Three Monkeys</i>	11, 12
August 15-17	<b>Final Exam</b> <b>(Cumulative: all lectures, videos since Term Test 2 and the entire textbook)</b> Date TBA, scheduled by the Registrar	

**\* PLEASE SEE APPENDIX 1 FOR REVISED PRIMATE TAXONOMIC CHART.** It REPLACES the taxonomic chart found on page 42 in the Strier textbook. **DO NOT** refer to the chart provided in your text – the chart I've provided is more current and widely used.

### **COURSE REQUIREMENTS**

**Term Test 1 (30%): Wednesday, July 17<sup>th</sup>** - This test will be multiple choice and short answer format and will cover all preceding lecture materials, videos and chapters 1-3 of the textbook.

**Term Test 2 (30%): Wednesday, July 31<sup>st</sup>** - This test will be multiple choice and short answer format (same as Term Test 1) and will test lecture materials and videos covered **since** Term Test One, as well as chapters 4-8 of the textbook.

**Cumulative Final Exam (40%): Registrar scheduled on August 15, 16 or 17<sup>th</sup>** - On this test, multiple choice, short answer, fill in the blank and matching are all fair game. The multiple choice section will test only new material (lectures, videos and textbook chapters 9, 10, 11, 12) covered **since** Term Test Two. Short answer, fill in the blank, and matching will include the new material plus require cumulative synthesis and evaluation of material covered during the entire term (i.e., the entire textbook and all lecture and video materials).

**Please note: ALL** lecture materials will be covered on exams; this includes videos, lectures, discussions, and guest lectures. Lectures do not exactly follow the text chapters so please read actively and carefully!

### **GRADE BREAKDOWN**

A+	100-94.9%	B+	84.8-79.9%	C+	70.8-66.9 %	D+	58.8-54.9%
A	94.8-89.9%	B	79.8-74.9%	C	66.8-62.9 %	D	54.8-49.9%
A-	89.8-84.9%	B-	74.8-70.9%	C-	62.8-58.9%	F	49.8% and less

### **FORMAL ACADEMIC ACCOMMODATIONS**

It is the students' responsibility to request academic accommodations. If you are a student with a documented disability who may require academic accommodations and have not registered with the Disability Resource Centre, please contact them at 403-220-8237 or [drc@ucalgary.ca](mailto:drc@ucalgary.ca). Students who have not registered with the Disability Resource Centre are not eligible for formal academic accommodations. You are also required to discuss your need with your instructor **no more than 14 days** after the start of the course. The DRC policy can be found at: <http://www.ucalgary.ca/drc/node/93>.

### **ADDITIONAL ACCOMMODATIONS**

**Missed Exams** – Missed tests automatically receive a score of zero. In the event of an emergency or illness, you **MUST** notify the instructor, Mackenzie Bergstrom ([mbergstr@ucalgary.ca](mailto:mbergstr@ucalgary.ca)), **BEFORE** the exam, and documentation (i.e. a doctor's note) may be requested before or at the time of the scheduled make-up test. Make-up tests will be scheduled no later than 1 week after the missed exam.

**Returned Exams** – Exam marks will be posted on Blackboard but exams will not be handed back. Students will be allowed to view both their own exam and the answer key during scheduled office hours, or by appointment. After reviewing the key and your notes, if you feel that you were marked unfairly or that marks were missed on your exam, you can address the concern with the instructor. You may be asked to prepare a short statement explaining the concern. The entire question will then be re-graded and marks adjusted (up or down, as is warranted) at the instructor's discretion.

No accommodation will be made for poor performance on exams. For instance, additional items cannot be submitted in lieu of exams and grades will not be curved. Please be sure that you are well-prepared for exams so that you perform well when you have the opportunity!

### **COMMUNICATION ETIQUETTE (e.g., email)**

- Please use your university account when possible. Otherwise, use an account with an appropriate name (Example of an unacceptable email: sexy mama@gmail.com).
- Use a clear subject line that includes the course name/section and the topic of the email such as "ANTH 311.01 Question about my schedule"
- Please be respectful (i.e., not too casual) when addressing me in an email. Use an appropriate greeting (acceptable: "Dear Ms. Bergstrom"; unacceptable: "Hey there"). Please proof-read, spell check and use complete sentences.
- Keep the question(s) short and to the point. Show that you have made an effort to find the answer first in the text and lecture material (or even an outside source). State what you know in relation to what you are having a difficult time understanding.
- Include your full name and student ID in the signature of your email.
- Allow 48 hours for a response, excluding weekends and holidays.

**\*Please note: I may choose not to respond to emails that do not follow the format outlined above so please be thorough and respectful when addressing me with a concern and in return, I will try my very best to get back to you as soon as possible to accommodate your needs.**

### **Examples of good and bad email etiquette:**

#### **1) Good**

Subject: ANTH 311.01 Question about traits

Dear Ms. Bergstrom,

I'm not sure I fully understand the difference between "derived" and "primitive" traits. Based on my understanding, primitive traits must have occurred as far back as a common ancestor of the species being compared. Derived traits can occur anywhere along the ancestral line after the common ancestor, including humans and modern day primates. So, is the difference that derived traits came about in whichever species in which they occur after the branching from a common ancestor, whereas primitive traits are there because the common ancestor had them and they have not been lost throughout evolution?

Thank you for your time,

Agood Student (SID# 12345678)

#### **2) Bad (yes, this was an actual email I received at 3pm the day of an exam)**

Subject:

what up? i dont get it. what is derived and primitive trate? r u gonna test this? can u get back to me fast cuz the test is today and i need to studdy.

(no name)

### **ACADEMIC INTEGRITY**

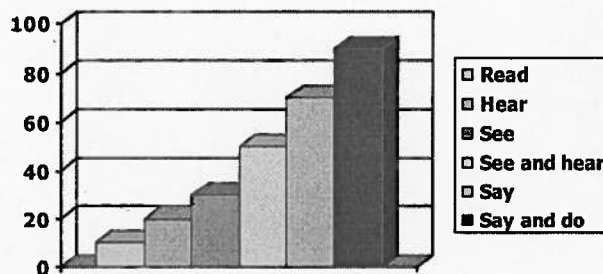
Any single occurrence of cheating, plagiarism, or other variant of academic misconduct upon any single assignment, essay, or examination, can result in disciplinary probation, suspension, or expulsion by the faculty dean. All university-level policies apply to this course. Details of this policy can be found in the University Calendar: <http://www.ucalgary.ca/pubs/calendar>, under "Academic Regulations."

## **EMERGENCY EVACUATION**

In the event that the classroom should need to be evacuated due to an emergency situation please note that the primary assembly point from our classroom (ES162) shall be at the ICT Food Court, and the alternate assembly point shall be at the Social Sciences Food Court.

## **FINAL NOTES FOR SUCCESS**

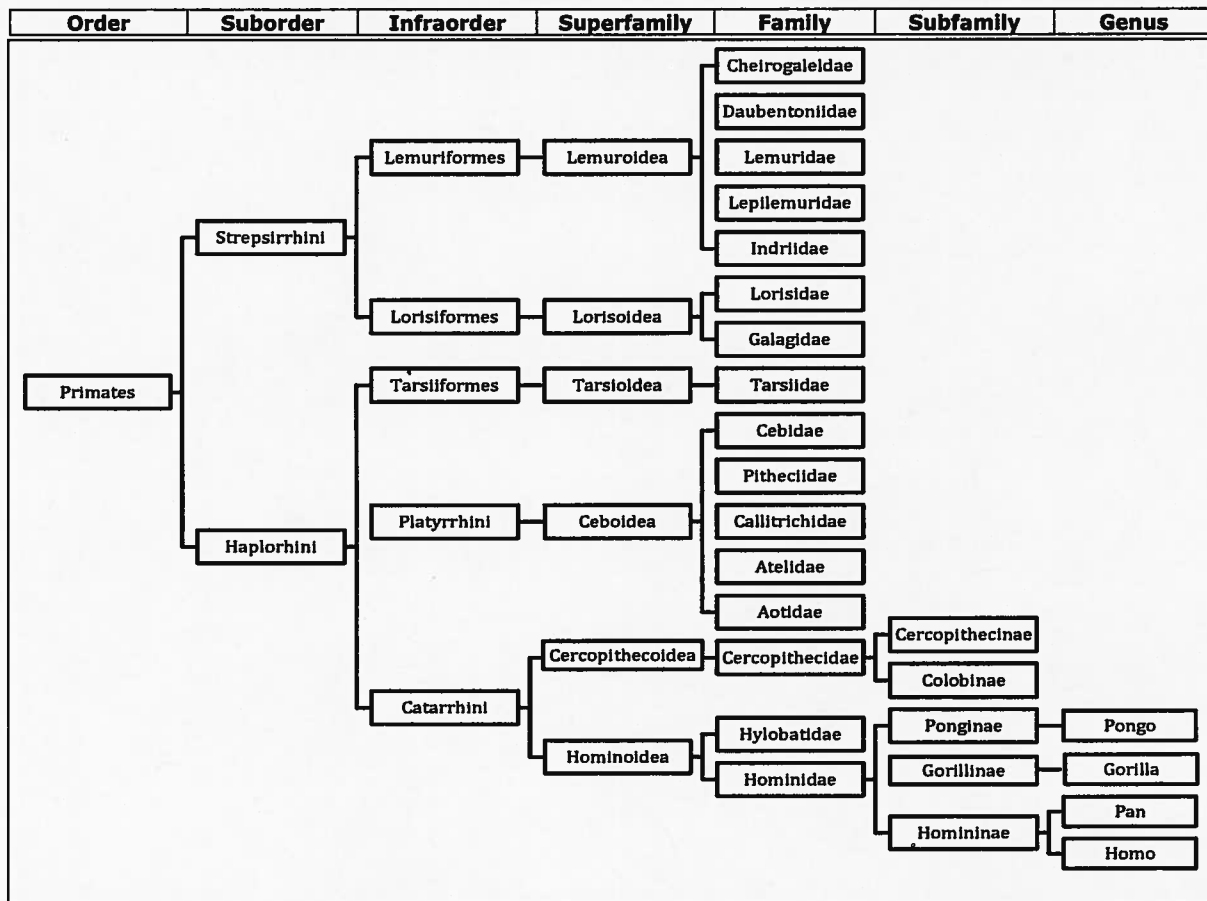
- If at any time during the course you do not understand the material, please ask me: a) during class (please raise your hand), b) during lecture breaks, c) before or after class, d) via email, or e) during office hours. I would like to help you succeed!
- I encourage you to get to know some of your fellow students and study together. Studies show that the average person only retains 10% of the material they READ versus 90% of the material they READ, then RECITE, EXPLAIN OR DEMONSTRATE! (See graph from the U of C Teaching and Learning Centre below):



**Thank you for your attention. I am looking forward to a great semester! ☺**

**APPENDIX 1: PRIMATE TAXONOMIC CHART**

This chart must be memorized for Term Test 1 (and retained for the final). It REPLACES the taxonomic chart found on page 42 in the Strier textbook. DO NOT refer to the chart provided in your text – the chart below is more current and widely used.



## **APPENDIX 2: ADDITIONAL RESOURCES FOR STUDENTS ENROLLED AT THE U OF C**

Because this is a night class, I would like to highlight the contact information for the U of C campus Safewalk program, as well as the contact information for Campus Security.

### **Safewalk**

Phone: 403.220.4750

Email: [safewalk@ucalgary.ca](mailto:safewalk@ucalgary.ca)

Website: <http://www.ucalgary.ca/security/safewalk>

Available 24 hours a day/7 days a week/365 days per year

“Safewalk volunteers walk people safely to their destination on campus. This service is free and available to students, staff and campus visitors. Safewalks are done in male/female pairs. The volunteers walk anywhere on campus (including McMahon Stadium, Health Sciences, Student Family Housing, the Alberta Children’s Hospital and the University LRT station).”

### **Campus Security**

Phone: 403.220.5333

Email: [Campuse.security@ucalgary.ca](mailto:Campuse.security@ucalgary.ca)

Website: <http://www.ucalgary.ca/security/>

“Campus Security works closely with the university community, Calgary Police Service and other agencies to maintain the University of Calgary as a pleasant place to live, work and study. If you have a safety concern or a question about the services Campus Security offers please contact us.” Not only does Campus Security provide for on campus emergency service, but also routinely posts campus wide security alerts/bulletins. Campus Security also offers a Working Alone Program that enhances student safety while working alone on campus outside of regular work hours, such as evenings and weekends.

### **Wellness Centre**

370, MacEwan Student Centre,

Phone: 403.210.9355

Open: Monday to Friday 0900-1630 hrs. (Walk-ins stop at 15:30, but subject to demand)

Website: <http://www.ucalgary.ca/uhs/>

“University Health Services provides quality health care and education in a reassuring friendly manner. Its primary focus is centered on students.”